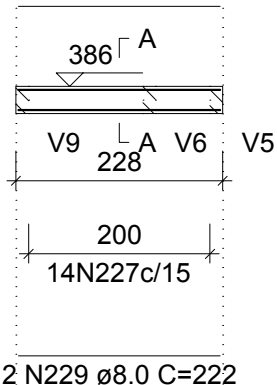


V15 (14 x 30)

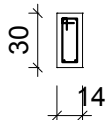
ESC 1:100

2 N228 ø5.0 C=222



SEÇÃO A-A

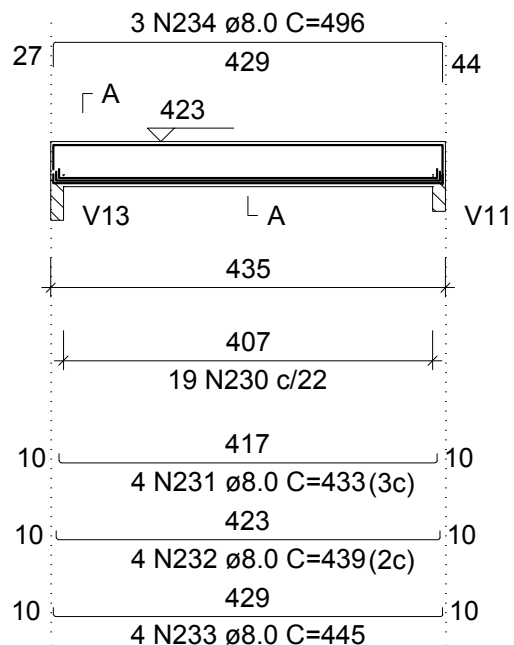
ESC 1:50



14 N227 ø5.0 C=75

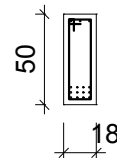
V16 (18 x 50)

ESC 1:100



SEÇÃO A-A

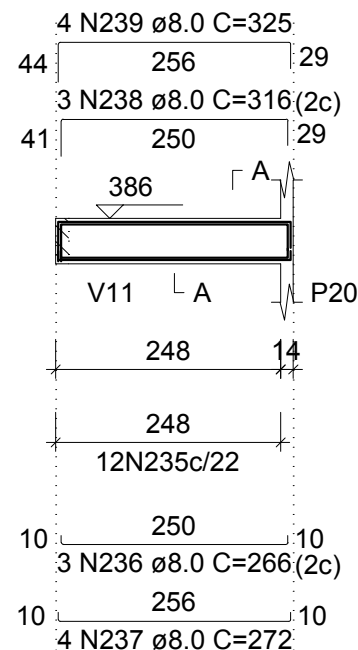
ESC 1:50



19 N230 ø5.0 C=123

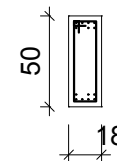
V17 (18 x 50)

ESC 1:100



SEÇÃO A-A

ESC 1:50



12 N235 ø5.0 C=123